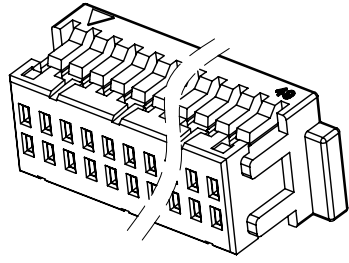
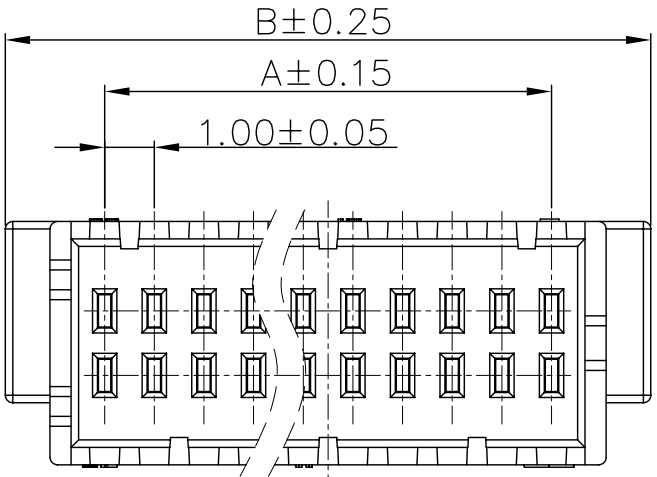
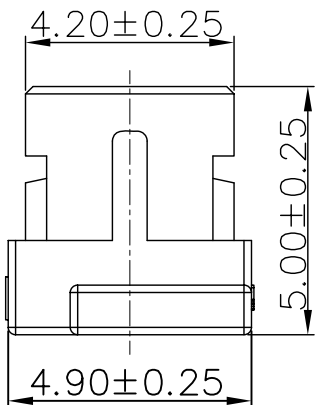
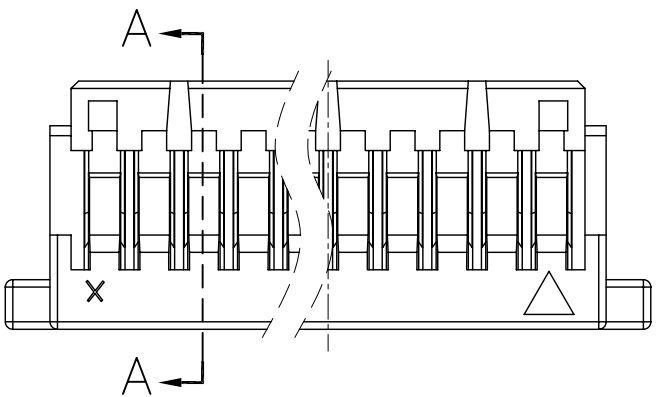


REV.	ECN NO.	DESCRIPTION	DATE	DESIGN
A				



Specifications:  
 Current rating: 1A AC/DC.  
 Voltage rating: 50V AC/DC  
 Temperature range: -40°C~+105°C.  
 Contact resistance: 20MΩ Max.  
 Insulation resistance: 100MΩ Min.  
 Withstanding voltage: 500V AC/minute.  
 Material: PA66/PBT.UL94V-0.



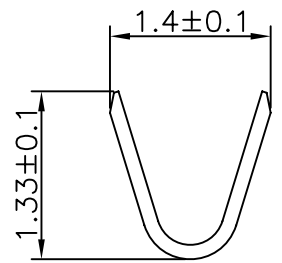
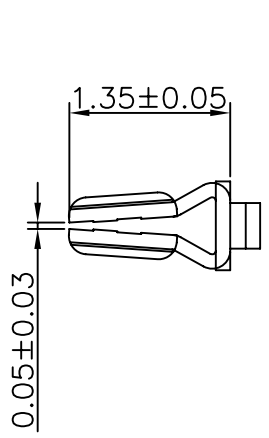
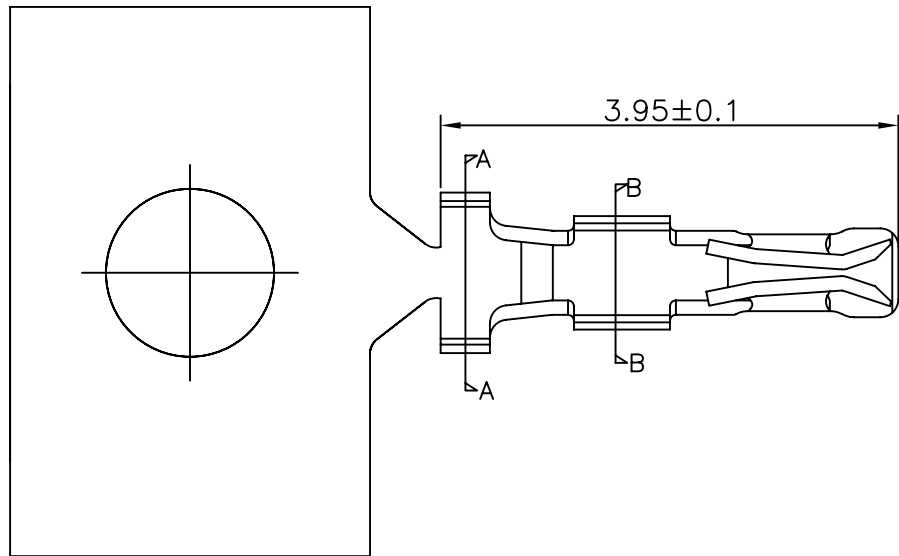
PART NO.	DIMENSIONS	
	A	B
A1001H-2X05P	4.00	8.00
A1001H-2X06P	5.00	9.00
A1001H-2X10P	9.00	13.00
A1001H-2X15P	14.00	18.00
A1001H-2X20P	19.00	23.00
A1001H-2X25P	24.00	28.00

**CNJM** Joint More Precision electronics Co.,Ltd.

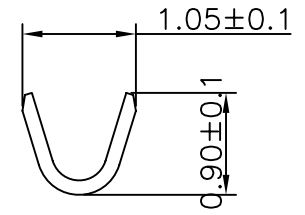
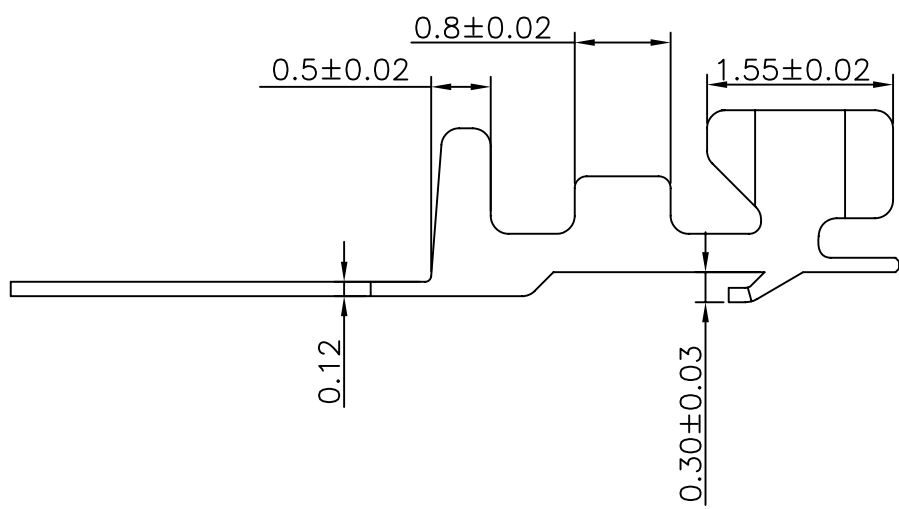
DIM	TOL	DIM	TOL
X	/	X'	/
X.X	0.25	X.X'	/
X.XX	0.15	X.XX'	/
X.XXX	0.10	X.XXX'	/

DRAW NO.	DATE	P/N NO:	DRAW NAME:
DESIGN: 陈雪峰	2017.06.03	A1001H-2XNP	1.0mm pitch Housing
CHECK: 杨焯		REV. A/1	SCALE 1:1
REVIEW:		UNIT: mm	SHEET: 1 OF 1

REV.	ECN NO.	DESCRIPTION	DATE	DESIGN
A				



SECTION:A-A



SECTION:B-B

**CNJM** Joint More Precision electronics Co.,Ltd.

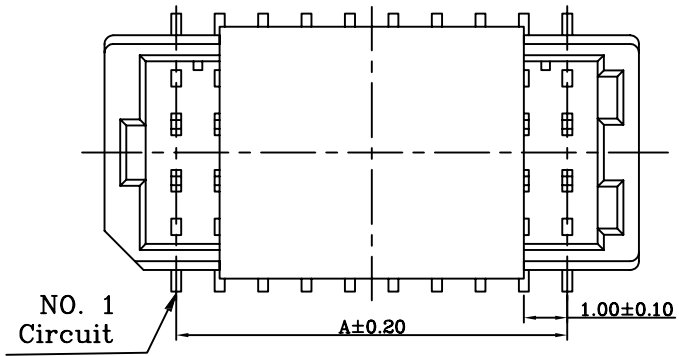
Part NO.	Wire range	Insulation O.D.	Materials	Finish	Qty/reel
A1001-TPE	AWG#32-28	0.8mm(max)	Phosphor Bronze	Tin-plated	20000PCS
A1001-GPE	AWG#32-28	0.8mm(max)	Phosphor Bronze	Gold-plated	20000PCS

DIM	TOL	DIM	TOL
X.	/	X*	/
X.X	0.25	X.X*	
X.XX	0.15	X.XX*	
X.XXX	0.10	X.XXX*	/

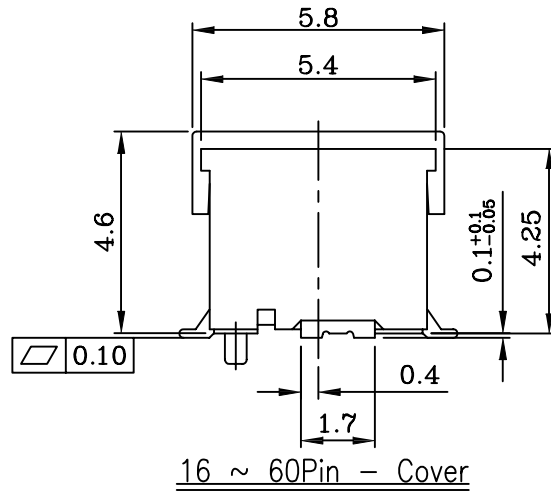
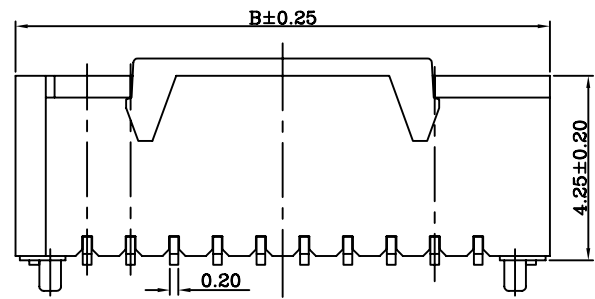
DRAW NO.	DATE	P/N NO.	DRAW NAME:
DESIGN: 陈雪峰	2017.06.03	A1001-XXX	1.0mm pitch terminal
CHECK: 杨焯			
REVIEW:		REV.A/1	SCALE 1:1

UNIT:	SHEET:	
mm	1 OF 1	☉

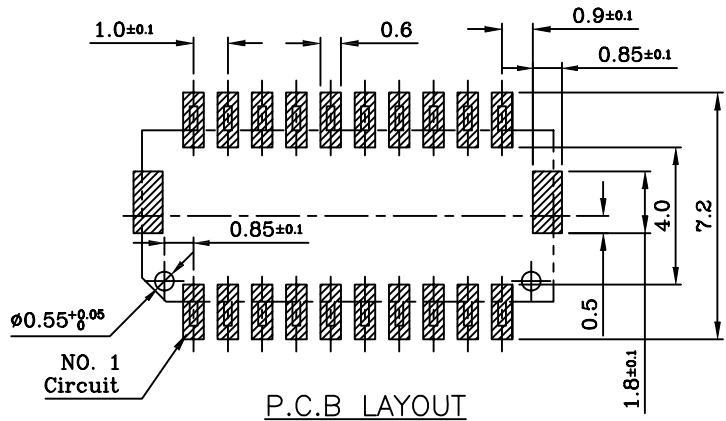
REV.	ECN NO.	DESCRIPTION	DATE	DESIGN
A				



Specifications:  
 Current rating:1A AC/DC.  
 Voltage rating:50V AC/DC  
 Temperature range:-40°C~+105°C.  
 Contact resistance:20MΩ Max.  
 Insulation resistance:100MΩ Min.  
 Withstanding voltage: 500V AC/minute.  
 Material:PA6T.UL94V-0.



PART NO. (180°)	Dimensions	
	A	B
A1001WV-S-2X08P	7.00	10.30
A1001WV-S-2X09P	8.00	11.30
A1001WV-S-2X10P	9.00	12.30
A1001WV-S-2X12P	11.00	14.30
A1001WV-S-2X14P	13.00	16.60
A1001WV-S-2X15P	14.00	17.30
A1001WV-S-2X17P	16.00	19.30
A1001WV-S-2X20P	19.00	22.30
A1001WV-S-2X25P	24.00	27.30
A1001WV-S-2X30P	29.00	32.30



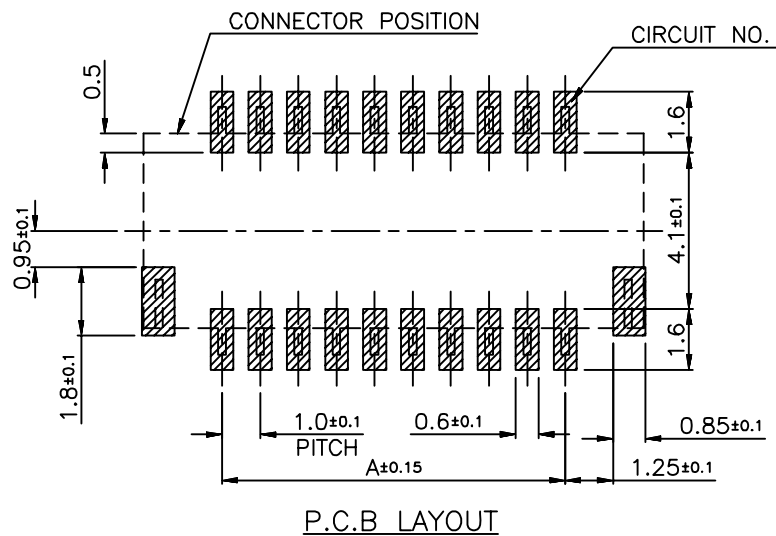
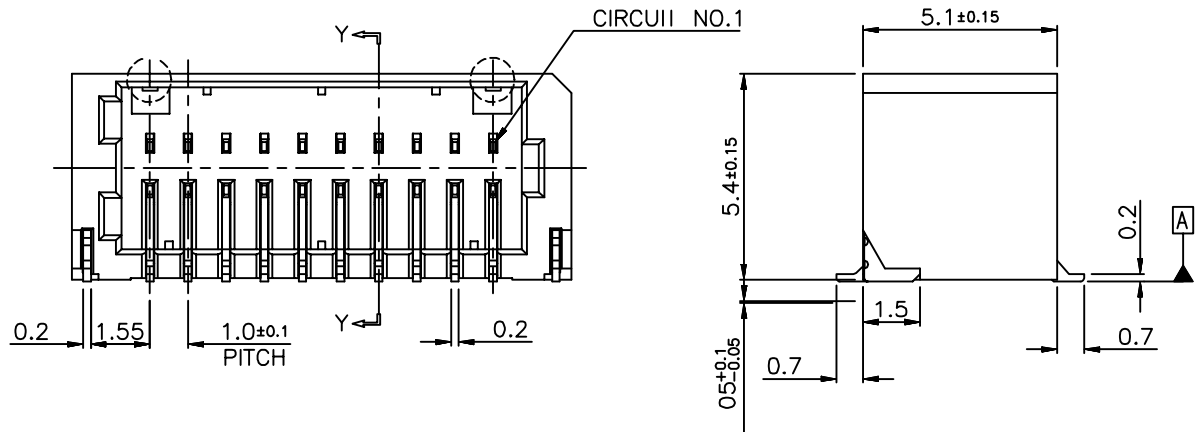
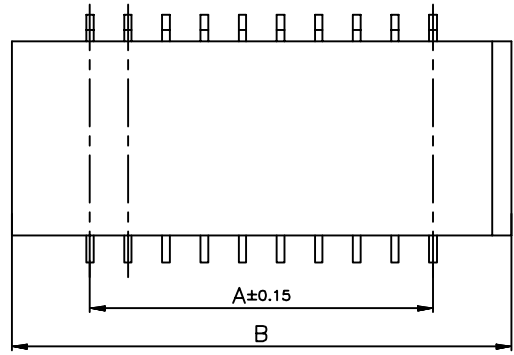
**CNJM** Joint More Precision electronics Co.,Ltd.

DRAW NO.	DATE	P/N NO:	DRAW NAME:
DESIGN: 陈雪峰	2017.06.03	A1001WV-S-2XNP	1.00mm pitch 180° wafer
CHECK: 杨焯			
REVIEW:		REV.A/1	SCALE 1:1
		UNIT: mm	SHEET 1 OF 1

DIM	TOL	DIM	TOL
X	/	X*	/
X.X	0.25	X.X*	
X.XX	0.15	X.XX*	
X.XXX	0.10	X.XXX*	/

REV.	ECN NO.	DESCRIPTION	DATE	DESIGN
A				

Specifications:  
 Current rating:1A AC/DC.  
 Voltage rating:50V AC/DC  
 Temperature range:-40°C~+105°C.  
 Contact resistance:20MΩ Max.  
 Insulation resistance:100MΩ Min.  
 Withstanding voltage: 500V AC/minute.  
 Material:PA6T.UL94V-0.



PART NO.	DIMENSIONS	
	A	B
A1001WR-S-2X10P	9.00	13.10
A1001WR-S-2X15P	14.00	18.10
A1001WR-S-2X20P	19.00	23.10
A1001WR-S-2X25P	24.00	28.10

**CNJM** Joint More Precision electronics Co.,Ltd.

DRAW NO.	DATE	P/N NO:	DRAW NAME:
DESIGN: 陈雪峰	2017.06.03	A1001WR-S-2XNP	1.00mm pitch 90° wafer
CHECK: 杨焯			
REVIEW:		REV.A/1	SCALE 1:1
		UNIT: mm	SHEET: 1 OF 1

DIM	TOL	DIM	TOL
X.	/	X°.	/
X.X	0.25	X.X°	
X.XX	0.15	X.XX°	
X.XXX	0.10	X.XXX°	/